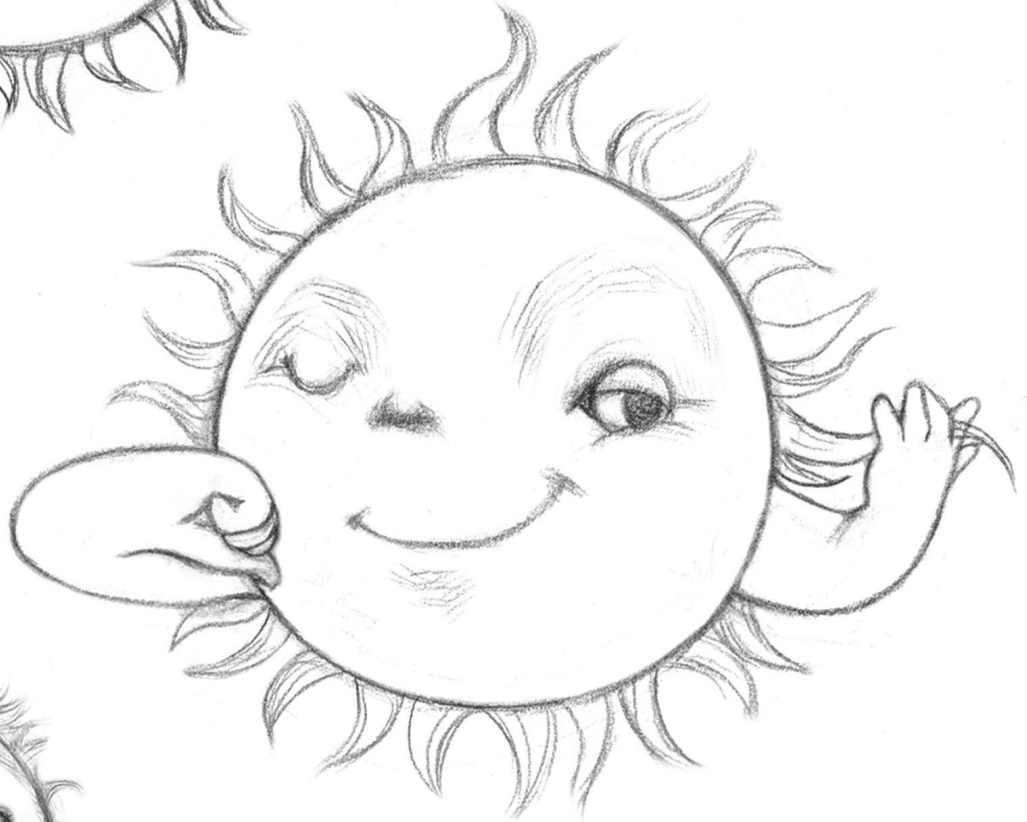
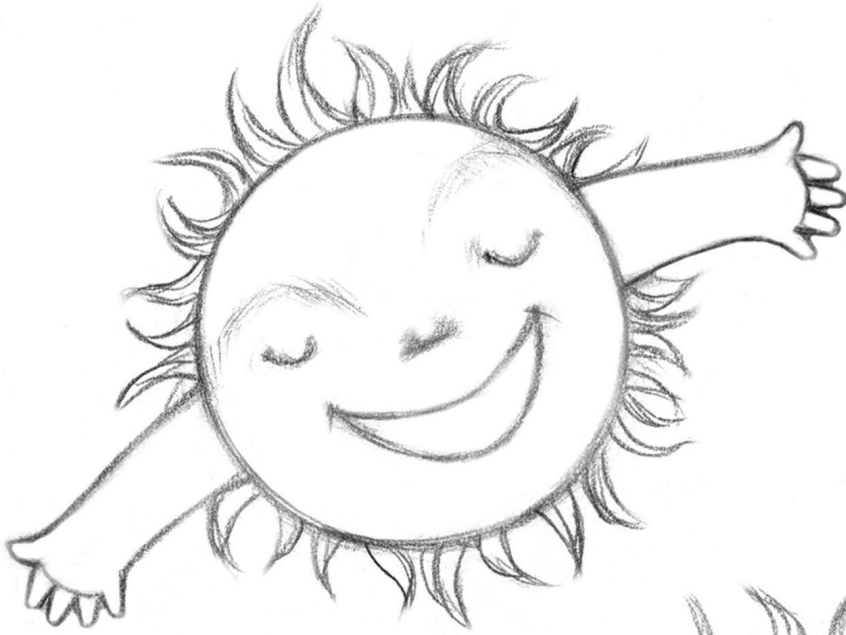


# if **SUN** could **SPEAK**

## Coloring the many faces of the Sun

The Sun gives us warmth and light. What colors feel warm? What colors feel like light?

---



# if **SUN** could **SPEAK**

## Coloring day and night

We experience day and night because of the way Earth spins relative to the Sun. Can you color the Earth, and the Sun? Which parts of the Earth would be darker? Which parts would be darker?

---



Where in the world is it daytime in this drawing?



What part of the world is seeing a sunset in this drawing?



What part of the world is able to stargaze in this drawing?

# if **SUN** could **SPEAK**

## Coloring the Sun, big and "small"

Did you know you can fit 1.3 million Earths in the Sun? That's how big the Sun is. It's easy to forget because it looks so small from where we are!

---

